



# WINTER 2020 BOROUGH INFORMER

## BOROUGH COUNCIL & STAFF

**John H. Weierman**  
President

**Jason Ferguson**

**John Kroesser**

**Lawrence Stevens**

**Salvatore DiLisio**

**Robert L. Kaler III**  
Mayor

**Michael J. DeFinis**  
Borough Manager/  
Secretary

**Jaime E. Snyder**  
Assistant Manager

**Fred Leister**  
Public Works Director

**Lindsay Hellmann**  
Public Information  
Coordinator

## BOROUGH OF HATFIELD SOCIAL MEDIA

 HATFIELD BOROUGH

 @HatfieldBorough

 Comcast- Channel 22  
Verizon- Channel 24

[WWW.HATFIELDBOROUGH.COM](http://WWW.HATFIELDBOROUGH.COM)

## **BOROUGH OF HATFIELD APPROVES 2020 BUDGET**

The Borough of Hatfield, Borough Council approved the 2020 Budget on Wednesday December 4th, 2019.

Borough Council President, John Weierman, thanked all members of Council, Mayor Kaler and Staff for their commitment to the budget process.

The approved 2020 Budget reflects no new revenue sources and maintains all Borough Services currently provided.

**The budget contains**

**NO INCREASE TO THE 2MIL REAL ESTATE TAX WHICH  
INCLUDES THE FIRE TAX, ONE OF THE  
LOWEST IN MONTGOMERY COUNTY.**

**The approved budget also includes**

**NO INCREASES TO ELECTRIC & SEWER RATES!**

Borough Council and Mayor Kaler wish all Hatfield Borough businesses and residents a Prosperous New Year!

## **TOWN HALL MEETING FEBRUARY 18TH**

**7:00PM- 401 South Main Street.**

**Topics of discussion will include the following:**

Power Outage Updates  
Advanced Metering Infrastructure System (AMI)  
Behind the Meter Generation (BTM)  
12KV vs 69KV Service  
Power Purchase Agreements (PPA)  
Customer Service and Responsibilities

Borough Information Resources  
2020 Budget  
2020 Roadway Resurfacing Projects  
2020 ADA Ramp Projects  
Grant Projects



# SPOTLIGHT

## CITIZEN OF THE YEAR

**CONGRATULATIONS TO BOROUGH RESIDENT,  
ANN KLASKI!  
Thank you for all you do to support our community!**



Pictured: Borough Council President, John Weierman with Citizen of the Year, Ann Klaski



**BOROUGH OF HATFIELD**  
 MONTGOMERY COUNTY, PENNSYLVANIA  
**RESOLUTION No. 2019-28**

**A RESOLUTION RECOGNIZING ANN KLASKI  
 AS CITIZEN OF THE YEAR**

**WHEREAS**, Ann Klaski has been a Hatfield Borough Resident for over twenty-one years where she has raised a family and continues to enjoy life with her husband, children, and grandchildren; and

**WHEREAS**, Ann has been active in community donations, contributing multiple bags of food each month to the Borough Office which is delivered to the Hatfield Food Cupboard. Ann's donations help accumulate the over 18,000 lbs. of food that goes out of the Hatfield Food Cupboard each year to help the families in our community. Without donations from community members, such as Ann, many families in the Hatfield Community would not be able to provide food for their families; and

**WHEREAS**, in her spare time Ann likes to knit, especially winter scarfs, which she donates to local churches for families in need.

**NOW THEREFORE, IT IS HEREBY RESOLVED** that the Borough Council of the Borough of Hatfield, Montgomery County, Pennsylvania, take great pride in recognizing Ann Klaski for her donations that have made a positive impact for families of the Hatfield Community. It is with great pleasure that the Borough Council of the Borough of Hatfield recognize Ann Klaski as Citizen of the Year 2019.

**TAKEN UNDER OUR HANDS** this 20<sup>th</sup> day of November 2019.


### STAFF UPDATE


HATFIELD BOROUGH IS NOW ACCEPTING DEBIT and CREDIT CARD PAYMENTS FOR UTILITY BILLS and REAL ESTATE TAX PAYMENTS! You will also have the option of paying with e-check online. Please take advantage of e-billing for your Borough utility bills. Sign up at the Borough office, call 215-855-0781 extensions # 100 or email [utilitybilling@hatfieldborough.com](mailto:utilitybilling@hatfieldborough.com).





## PUBLIC POWER


### THE BENEFITS OF PUBLIC POWER





 Public power keeps money in the local community, helping to stimulate economic growth.


 Public power is owned by the community, which means we exist to serve our customers, not stockholders.

 Public power is not-for-profit, meaning our goal is to provide the highest level of service at the lowest possible price.

 Public power rates are locally controlled, meaning that customers have a real say.

 Public power workers are friends, family and neighbors, which means we care about ensuring reliable, quality service.

 Public power is part of the community, which means we are vested in being good environmental stewards.



## UTILITY REMINDERS

### Electric Payment Reminder ALL ELECTRIC PAYMENTS ARE DUE MONTHLY BY THE 15th.

Should the 15th fall on a weekend day, ALL payments must be put in the drop box located left of the entrance at the Borough Office (401 S MAIN ST.) by 8am Monday morning to be considered on time.

Payments may be dropped off during regular business hours or put in the drop box during off hours.

Payments sent by mail adhere to the same guidelines as listed above.

A postmark is not considered as "payment received".

**Please note that ALL electric and sewer payments must be presented with your payment stubs in order to ensure your account is properly credited. Failure to comply may result in improper application of payment.**

***Please do not put cash in the overnight box.***

Borough of Hatfield Office hours are Monday through Friday 8:00am-4:30pm.





# STORMWATER & RECYCLING



## What can you do to reduce or prevent storm water pollution?

<https://www.csuci.edu/publicsafety/ehs/stormwater.htm>



- Sweep or rake up debris on surfaces
- Place waste in containers for proper disposal
- Use less toxic weed and pest control methods
- Avoid over watering
- Don't dump chemicals or oil down the storm drain
- Properly maintain your pool and spa
- Don't drain unless absolutely necessary
- Check local regulations when draining
- Use a full or self-service car wash that recycles water
- When washing cars at home use as little water as possible, use biodegradable cleaning products, and drain water into vegetated or graveled surfaces
- Pick up animal waste

retrievr

**We all have clothes and electronics we no longer use cluttering our closets, drawers, and basements. Retrievr is the only program that collects these items right from your door and then recycles them for you.**

Your neighbors have already discovered the joy of decluttering their homes by recycling over 50 tons of clothing and electronics. Now you can, too!

Thanks to Montgomery County's partnership with **retrievr**, you can recycle your clothing and electronics right from your doorstep. This service is **FREE** for all clothing, textiles, and small electronics. **Simply visit [retrievr](#) or text the word PICKUP to 757-70-FETCH (757-703-3824), and **retrievr** will send a truck to your home. Bag up your items and leave them on your porch; or, leave them inside your door and tell **retrievr** to ring your bell when they arrive.**

Convenience fees apply only for certain items: \$10 for each microwave, \$35 for each TV under 150 lbs, and \$100 for each TV 150 lbs or more.

Visit [retrievr](#) or text **PICKUP to 757-70-FETCH** to get started.

**FAQ**

**When does the program go into effect?**  
Right now! Simply visit [retrievr.com](#) or text the word PICKUP to 757-70-FETCH (757-703-3824) and follow the guided scheduler to set a date.

**What if I can't send text messages?**  
Call our number and leave a voicemail. Someone will contact you to schedule a pickup.

**What items do you accept?**  
Visit [retrievr](#) for a full list of accepted items.

**Where should I leave my items?**  
You can leave your items on your porch, just outside your door, or just outside your garage.

**What if I have items I don't want to leave outside, is that okay?**  
Yes! You might prefer to keep items like computers, phones, or tablets indoors until the driver arrives. When you schedule your pickup, you can ask **retrievr** to ring your bell when they arrive.

**Can I get a tax write off for items collected?**  
No. Just as your recycled paper, bottles and cans are not tax deductible, neither are recycled clothing and electronics.

If you have access to a local donation center and prefer to donate some or all of your items, we respect that choice. Donation keeps your items out of the landfill, which makes us happy.

1

Tell us what you're recycling

2

Pick a date for your pickup

3

A truck comes to your door



## IMPORTANT INFORMATION

### VOLUNTEERS NEEDED!

We currently have  
openings for

- Planning Commission
- Pool Advisory Board
- HERC



Please contact [lhellmann@hatfieldborough.com](mailto:lhellmann@hatfieldborough.com) if you are interested in applying for any of these committees.

### **Registration for the [Hatfield Aquatic Center](#)**

**is now open!**

**Visit [Hatfield.org](http://Hatfield.org) to sign up before 12:00pm on March 6th and receive a 10% discount on Season Passes.**

**Hatfield Township offers a variety of discounted amusement park and ski lift tickets.**

**You may purchase them in person at 1950 School Rd. They accept cash & check.**



# MARK YOUR CALENDAR

## BOROUGH COUNCIL MEETINGS

### PLANNING COMMISSION- 7:00 pm

March 2nd  
March 30th  
May 4th  
June 1st  
July 6th  
August 3rd  
August 31st  
October 5th  
November 2nd  
November 30th

### REGULAR & WORKSHOP MEETING- 7:30pm

February 19th  
March 4th  
March 18th  
April 1st  
April 15th  
May 6th  
May 20th  
June 17th  
July 15th  
August 19th  
September 2nd  
September 16th  
October 7th  
October 21st  
November 4th  
November 18th  
December 2nd  
December 16th

**All meetings are held at the Hatfield Municipal Complex- 401 South Main Street.**

All are welcome to attend!

## HATFIELD ECONOMIC REVITALIZATION COMMITTEE

### (HERC) 8:00am

If you are a Borough Business Owner or a Borough Business Employee and are interested in joining the HERC Committee, please contact Lindsay at [lhellmann@hatfieldborough.com](mailto:lhellmann@hatfieldborough.com) Or 215-855-0781 option 9.

February 26th	March 25th
April 22nd	May 27th
June 24th	July 22nd
August 26th	September 23rd
October 28th	November 18th
December 16th	

**All meetings are held at the Hatfield Municipal Complex 401 South Main Street.**



## HATFIELD HISTORICAL SOCIETY PROGRAMS

**All programs are held at the Hatfield Volunteer Fire Company- 75 North Market Street Beginning at 7pm**

January 28th  
March 23rd  
April 27th  
September 28th  
October 26th  
November 23rd

## HATFIELD BOROUGH OFFICE CONTACTS

**Phone- 215-855-0781  
Fax- 215-855-2075**

### Options:

- 1- Borough Manager
- 2- Public Works Director
- 3- Zoning Officer
- 4- Utilities Coordinator
- 5- Assistant Manager/ Human Resources
- 6- Treasurer
- 7- Tax Collector
- 8- Fire Marshall
- 9- Public Information Coordinator
- 0- Operator

## UTILITIES

**Electric-**  
Hatfield Borough  
215-855-0781 option 4

**Sewer-**  
Hatfield Borough  
215-855-0781 option 4

**Gas-**  
PECO Energy  
1-800-494-4000

**Water-**  
N. P. Water Authority  
215-855-3617

## CHAMBER OF COMMERCE LUNCHEON MEETINGS

are held at the Hatfield Township building and begin at 12:00pm.

January 27th  
March 23rd  
April 27th  
September 28th  
October 26th  
November 23rd



## DECORATING CONTEST

**Congratulations to the following residents on winning the Holiday Decorating Contest...**

1st place— The Belfatti Residence- \$250.00



2nd place— The Goldoni Residence- \$150.00



3rd place— The Ertel Residence- \$100.00



Each of the above will be rewarded with electric credit.

We thank everyone for their participation and encourage you to sign up next year.

***Wishing you all a Happy and Healthy New Year!***



**Hatfield Borough Office**

37 n. Market St,  
PO Box 190  
Hatfield PA 19440

**Tax Collector's Corner- "From the desk of Nancy DeFinis"**

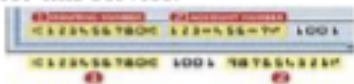
Happy New Decade! Thank you for another wonderful year. Good news, we have NO tax increase for the Borough or County in 2020. Please watch your mail for your tax bill to arrive in late February. If you do not receive one please contact me by mid-March. For your convenience you may pay your real estate taxes by credit card on MuniPay or in the Borough Office. To pay online go to [www.hatfieldborough.com](http://www.hatfieldborough.com). Look for the "payments" option on the top of the home page. Click on the link to be directed to the MuniPay website.

**Hatfield Borough also offers the convenience of accepting MasterCard, Discover, American Express and Visa credit cards.** There is a convenience fee of \$3.00 for bills less than \$113.00. Bills over \$113.01 will have a fee of 2.65% attached to their total. Stop by my office on tax collection days printed on your bill or schedule an appointment. Additionally, you have the flexibility to go online to use your MasterCard, Discover Card, American Express or Visa.

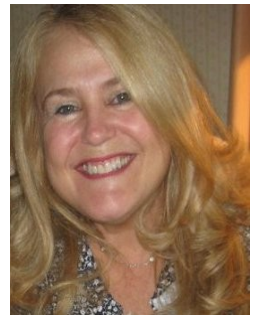


**Electronic Check Payments**

**Hatfield Borough now accepts electronic check payments using our online payment service.** Payments will be charged to your checking or savings account at your bank. You will need your 9-digit routing number, as well as your account number from your personal checks (see example below). A per transaction service fee of \$1.50 will be charged by the payment processing company for this service.



I can be reached by email [ndefinis@hatfieldborough.com](mailto:ndefinis@hatfieldborough.com) or by telephone at 215-855-0781 x 7. Leave me a detailed message with your name and phone number and I will get back to you as soon as I'm able. As always, thank you for allowing me to be your tax collector in our town that we love.



Nancy DeFinis, Tax Collector