



SUMMER 2019 BOROUGH INFORMER

BOROUGH COUNCIL & STAFF

*John H. Weierman
President*

Jason Ferguson

John Kroesser

Lawrence Stevens

*Robert L. Kaler III
Mayor*

*Michael J. DeFinis
Borough Manager/
Secretary*

*Jaime E. Snyder
Assistant Manager*

*Fred Leister
Public Works Director*

*Lindsay Hellmann
Public Information
Coordinator*

HATFIELD BOROUGH

FALL FEST

AND CAR SHOW!

SATURDAY, SEPTEMBER 28, 2019

TIME: 3:00-7:00pm

LOCATION: East Lincoln Avenue Hatfield, PA

GPS ADDRESS FOR VEHICLE REGISTRATION:
8 North Market Street

**Vehicle registration will take place from 1:30-3:00pm.*

FOR EVENT ATTENDEES

- *Food for Purchase from Local Vendors
- *FREE Activities and games for Children including Face Painting, Balloon Art, Music, Moon Bounces and More!
- *Hatfield Auto Museum will be open.
- *Bring a canned good or non-perishable item to the Borough Table in Memorial Park and get a raffle ticket. Limit of 5 unexpired items per person.
- *Much, much more!



CAR SHOW PARTICIPANTS

- * ALL CAR SHOW PARTICIPANTS WILL RECEIVE A FALL FEST HAT AND OTHER BONUS ITEMS.
- * SHOW TAKES PLACE ON PAVEMENT.
- * REGISTRATION IS FREE BUT DONATIONS ARE WELCOME! 100% of donations will go to a local charity.
- * CANNED GOODS WILL ALSO BE COLLECTED FOR A CHANCE TO WIN A GIFTCARD.

TO REGISTER: Contact Lindsay Hellmann
E-mail: hellmann@hatfieldborough.com
Phone: 215-355-0781 option 9
Website: www.hatfieldborough.com
Facebook: Hatfield Borough
Send/Drop Forms to: #01 South Main Street
 PO Box 190 Hatfield, PA 19440

THE FLOWER POWER BAND WILL BE LIVE IN THE FRANCONIA AUTO REPAIR PARKING LOT FROM 3PM-7PM

BOROUGH OF HATFIELD SOCIAL MEDIA

 HATFIELD BOROUGH
@HatfieldBorough



 Comcast- Channel 22
Verizon- Channel 24

WWW.HATFIELDBOROUGH.COM

THANK YOU TO OUR EVENT SPONSORS:











BURSICH ASSOCIATES INC.

BERGEY'S INC.

CARR & DUFF INC.

CLARKE'S LANDSCAPING & LAWN CARE



Borough Council, Staff & Mayor

MUNICIPAL COMPLEX UPDATE

Hatfield Borough Council, Mayor Kaler and Tax Collector Nancy DeFinis are proud to announce the opening of the new Hatfield Borough Municipal Complex.

This long awaited new modern facility will serve the residents and businesses for many years. Borough Council has taken every effort to complete the project on time and on budget, without an increase to real estate taxes. Borough Council would like to thank all residents and businesses for your patience during construction.

Borough of Hatfield – Advanced Metering Project

The Borough of Hatfield is initiating an Advanced Metering Infrastructure (AMI) project to replace its electric meters. The effort is part of an overall process to improve customer service and modernize its utility system. Over the next several months, the Borough will be communicating with residents and businesses about the project.

AMI Project Objectives

Today, meters are read with a hand held radio frequency device. This process is labor-intensive and adversely affected by bad weather or access to meters in difficult to read locations.

Advanced meters read electric meters every 15 minutes, and securely transmit this information to the Borough's offices several times per day. This improves the accuracy of utility bills.

When customers move in or out of premises in the Borough today, they must wait for a utility worker to arrive and take beginning and final readings. Advanced electric meters enable remote readings for real time accurate billing.

When storms move through the area and knock out electric service, the Borough's electric utility workers must rely on customer calls to determine locations where electric facilities may have been damaged. Advanced electric meters produce a power outage notification, enabling faster restoration.

Advanced electric meters provide key notifications to the Borough's utility operators like low voltage or high temperature alarms.

. Modernizing the Borough's utility systems provides additional benefits

Cost reductions will be enabled by less labor-intensive meter reading processes and eliminating truck rolls to connect & disconnect electric service.

Reductions in labor-intensive meter reading processes allow the Borough to reallocate those resources to perform other utility operation an optimization tasks.

Customers with high bill complaints usually require a utility worker to perform a check reading. With advanced metering, customer service personnel in the Borough's offices will have access to electric meter readings, reducing the need for check readings.

The reduction in truck rolls will reduce fuel consumptions and emissions from the Borough's fleet of vehicles.

Improvements to system operations through reductions in losses (more accurate metering).



Important Information

HATFIELD BOROUGH OFFICE CONTACTS

Phone– 215-855-0781
Fax– 215-855-2075

Options:

1– Borough Manager
 2– Public Works Director
 3– Zoning Officer
 4– Utilities Coordinator
 5– Assistant Secretary/
 Human Resources
 6– Treasurer
 7– Tax Collector
 8– Fire Marshall
 9– Public Information
 Coordinator
 0- Operator

BOROUGH COUNCIL MEETINGS

PLANNING COMMISSION– 7:00 pm
 November 4th
 December 2nd

REGULAR MEETING– 7:30pm
 October 16th
 November 20th
 December 18th

WORKSHOP MEETING– 7:30pm
 October 2nd
 November 6th
 December 4th

All meetings will now take place at the Hatfield Municipal Complex– 401 South Main Street.
 All are welcome to attend!

UTILITIES

Electric-
 Hatfield Borough
 215-855-0781 option 4

Sewer-
 Hatfield Borough
 215-855-0781 option 4

Gas-
 PECO Energy
 1-800-494-4000

Water-
 N. P. Water Authority
 215-855-3617


OFFICE CLOSURES FOR THE REMAINDER OF 2019

October 14th
November 11th, 28th & 29th
December 24th, 25th & 31st
January 1st, 2020

HATFIELD ECONOMIC REVITALIZATION COMMITTEE (HERC)


September 25th
 October 23rd
 November 20th
 December 18th

Fire Prevention Week & Public Power Week



October 6– October 12, 2019

Tune in to our Facebook page for some facts & information that week.



Electric Payment Reminder

ALL ELECTRIC PAYMENTS ARE DUE MONTHLY BY THE 15th.

Should the 15th fall on a weekend day, ALL payments must be put in the door mail slot located at the Borough Office (401 SOUTH MAIN STREET.) by 8am Monday morning to be considered on time.

Payments may be dropped off during regular business hours or put in the door mail slot during off hours. Payments sent by mail adhere to the same guidelines as listed above. A postmark is not considered as “payment received”.

Please note that ALL electric and sewer payments must be presented with your payment stubs in order to ensure your account is properly credited. Failure to comply may result in improper application of payment.

Please do not put cash in the overnight box.

Borough of Hatfield Office hours are Monday through Friday 8:00am-4:30pm.



Important Information

The Borough of Hatfield is Proud to be a Public Power Community

Hatfield Borough is proud to be one of the 35 municipalities in the Commonwealth of Pennsylvania that supplies electric power to residents and businesses in the Borough through a community owned, not for profit, municipal electric system. This allows Borough residents and businesses to enjoy reliable, reasonably priced electricity and allows Borough taxpayers to reap the benefits of lower real estate taxes for Borough services by using the revenue from the electric department to keep those taxes low.

In the Borough, it's not unusual to have Borough electric equipment, like poles, on your sidewalk or on your property, near your house. While the Borough strives to keep its service reliable, sometimes an outage occurs, due to damage to an essential part of the system, putting the power out for everybody.

You can do your part to ensure that you don't cause an outage for your neighbors by making sure your trees and landscaping are healthy and trimmed back. A tree falling on electric wires near your home can bring down the power for everyone.

In fact, the Borough's Code of Ordinances allows the Borough to charge the property owner when this occurs, and that can get expensive. Take a look at your property today, and take action to ensure you are doing your part to keep the lights on for everyone.

OUTDOOR OPEN BURNING PROHIBITED

1. Except as specifically authorized by the ordinance or permitted by the Borough Fire Marshall in writing, no person shall cause, allow, permit or maintain an outdoor bonfire or open burning on public or private property.
2. All burning, or open burning of the following is specifically prohibited:
 - A. Garbage
 - B. Household, business, or industrial trash or similar waste products of every kind or nature.
 - C. Loose leaves or yard trimmings.
 - D. Burning or open burning that results in unreasonable quantities of dense smoke, noxious fumes, gas, soot or cinders.
 - E. Open burning that violates the provisions of the International Fire Code as adopted by Hatfield Borough.
 - F. Burning of material that is required to be recycled under Pennsylvania law.

*Please refer to Chapter 7 of the Borough of Hatfield Code of Ordinances for the entire overview of the law.



Stay Informed

Bring this Coupon to the Borough Office and receive LEAF BAGS BUY ONE, GET ONE FREE! LIMIT 10 FREE!
2019/2020 season
401 SOUTH MAIN ST

LEAF PICK UP WILL TAKE PLACE EVERY MONDAY FROM OCTOBER 28TH THROUGH DECEMBER 2ND.

PLEASE HAVE THE LEAF BAGS AT THE CURB FOR PICK UP.

CURBSIDE CHIPPING WILL TAKE PLACE MONDAY OCTOBER 7TH.

PLEASE HAVE BRANCHES CURBSIDE BY 7AM.

NO SHRUBS OR BRANCHES BIGGER THEN 6 INCHES IN DIAMETER.

FOOD PANTRY

Our Community needs your help! The local food pantry is in need of stocking! Items in great need include personal hygiene items such as feminine products, deodorant, shampoo & conditioner, bar soap, toilet paper. Household items like laundry detergent, cereal, children's snacks, juice, etc. Every donation is greatly appreciated. For a more complete list call Emmanuel Church Food Cupboard 215-855-2540. Items may be dropped off at the Borough Office M-F 8:00-4:30pm year round.



Stormwater 101

- Follow manufacturer instructions for application of fertilizers, pesticides, and herbicides.
- Pet waste is not fertilizer; it contains harmful bacteria. Carry disposable bags during walks to pick up pet waste.
- Use native plants for your landscapes to help absorb, filter and slow down stormwater.

SCHOOL IS BACK IN SESSION, PLEASE KEEP AN EYE OUT FOR CHILDREN AND SCHOOL BUSES WHILE COMMUTING!

- Stop for school buses when lights are on.
- Be sure to obey speed laws.
- Put your phones down.
- Stop for pedestrians at crosswalks.
- Come to a complete stop at a stop sign.



We love our kids and want them home safe!



Community Spotlight

PUBLIC WORKS SPOTLIGHT!

This group of men continually work hard on keeping our Borough clean and safe. They do it all- from trash collection to snow removal to working outside on 100 degree days. They rarely get the recognition they deserve, so this is for them.

Thank you Fred, Ed, Derik, Steve & James!

We appreciate you!



New business in town!

We would like to welcome the
Towne Cobbler Shoe Repair to Hatfield Borough.

They are located at 37 North Market Street.
They are open from 10-5pm Monday through Friday and
Saturday 10-4pm.

Phone: 215-855-4275
www.thetownecobbler.com



the
**Towne
Cobbler**



HERC Committee

HATFIELD BOROUGH IS IN NEED OF VOLUNTEERS!

Have you ever been interested in helping out in our community or being a part of the events behind the scenes? If so, please acquire a volunteer form one of three ways:

- Stop in and fill one out at the Borough Office– 401 South Main Street
- Print one off the website at www.hatfieldborough.com (Resources- forms and permits)
- E-mail- lhellmann@hatfieldborough.com



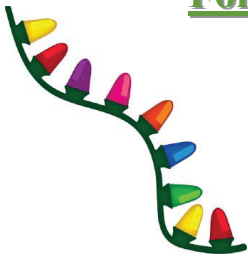
Holiday Fun!

Holiday Lights Decorating Contest

Forms will be available online and in the Borough Office at 401 South Main Street beginning November 4th.

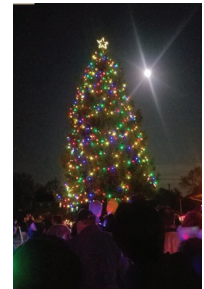
Winners will be rewarded as follows:

- 1st Place- \$250.00 Electric Credit
- 2nd Place- \$150.00 Electric Credit
- 3rd Place- \$100.00 Electric Credit



Rules & Regulations:

- Separate Categories for Residential and Commercial.
- Only window and outdoor décor will be judged.
- Winners must be current on their utilities.
- Judging will take place Friday December 20th between 6-9pm– your lights must be on during that time.
- Winners will be notified the following Friday by phone.



Christmas Tree Lighting Ceremony

Saturday December 7th 6:30pm

Please join us as we kick off the season with Christmas Carols and the Ceremonial Lighting of the Borough Christmas Tree at Memorial Park. Light refreshments to follow at the Hatfield Volunteer Firehouse–
75 N. Market St.

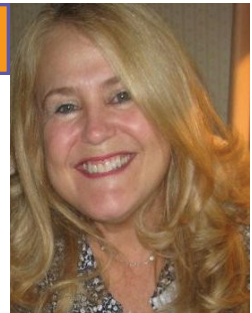




Hatfield Borough Office

37 n. Market St,
PO Box 190
Hatfield PA 19440

Tax Collector's Corner- "From the desk of Nancy DeFinis"



SUMMER 2019

Hope your summer was sensational. I am so excited to show off our new building and my office. It is wonderful for our hometown to have a new, beautiful, state of the art facility. If you are in the neighborhood stop in and see us. As always, watch us on your cable television through Comcast channel 22 or Verizon channel 24. Remember to follow Hatfield Borough on Facebook and Twitter for updates and current events. My email is ndefinis@hatfieldborough.com and phone number is 215-855-0781 option #7.

It is my honor to serve as your elected tax collector representing you and our town that I love.

Fondly,

Nancy DeFinis, TC