



SPRING TOWN HALL MEETING
MAY 14, 2025 7:00PM



Mary Anne Girard
Mayor
magirard@hatfieldborough.com



Jason Ferguson
Council President
jferguson@hatfieldborough.com



Richard Girard
Council Vice President
rgirard@hatfieldborough.com



Larry Burns
Council Member
lburns@hatfieldborough.com



James Fagan
Council Member
jfagan@hatfieldborough.com



Michelle Kroesser
Council Member
mkroesser@hatfieldborough.com



Malachi Nisbett
Junior Council Person
jcp@hatfieldborough.com



Marie Snyder
Tax Collector
taxcollector@hatfieldborough.com



Jaime E. Snyder
Borough
Manager



Stephen S. Fickert, Jr.
Borough Public Works Director
Electric Superintendent



Chad Camburn
Borough Engineer
Bursich Associates
A division of
Van Cleef Engineering

Staff: Diane Farrall, David Weiss, Lindsay Hellmann, Katie Vlahos
Public Works: Ed P., Derik S., James B., Wyatt H.

AGENDA

Welcome and Introductions

2025 Projects Overview

Broad Street & N. Main Street Utility Replacement Project
Roadway Resurfacing Project

2025 Financial Overview

2025 Budget Highlights
Borrowing & Debt Service
PJM Auction: Impact on Electric Rates

Ordinance Updates

Rental Inspection Program
Recycling

Communications & Events

Ready Montco
2045 Comprehensive Plan Survey
2025 Event Dates

Heritage Park Pond

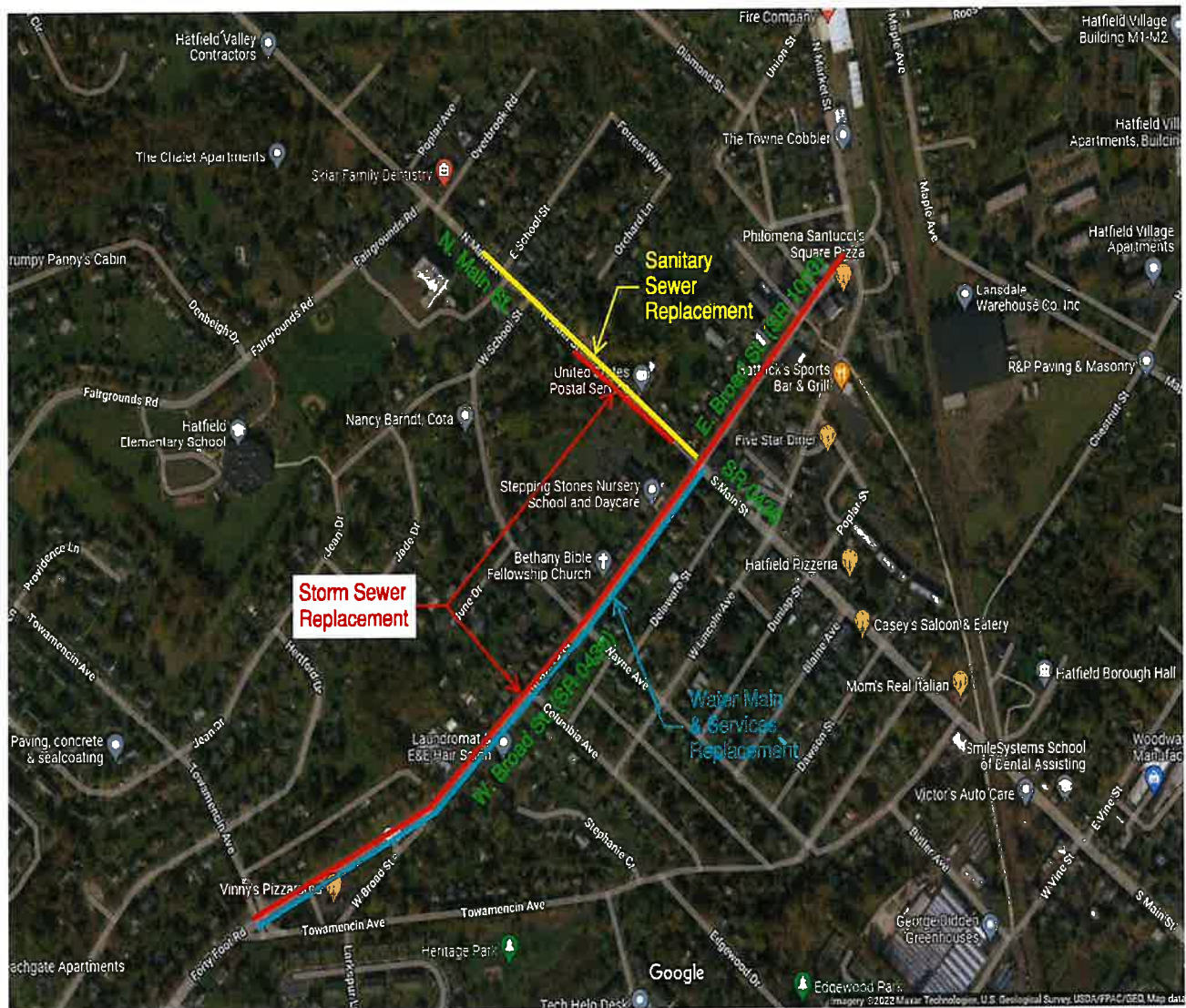
Q&A: use Zoom feature
email admin@hatfieldborough.com
text 267-421-4753

2025 Projects Overview

Broad Street & N. Main Street Utility Replacement Project
Roadway Resurfacing Project

Stephen S. Fickert Jr., Public Works Director, Electric Superintendent

Broad Streets & N. Main Street Utility Replacement Project



Hatfield Borough & NPA Utility Replacement
Broad St. and N. Main St. Utility Replacement Project

Broad Streets & N. Main Street Utility Replacement Project

Grant Awards

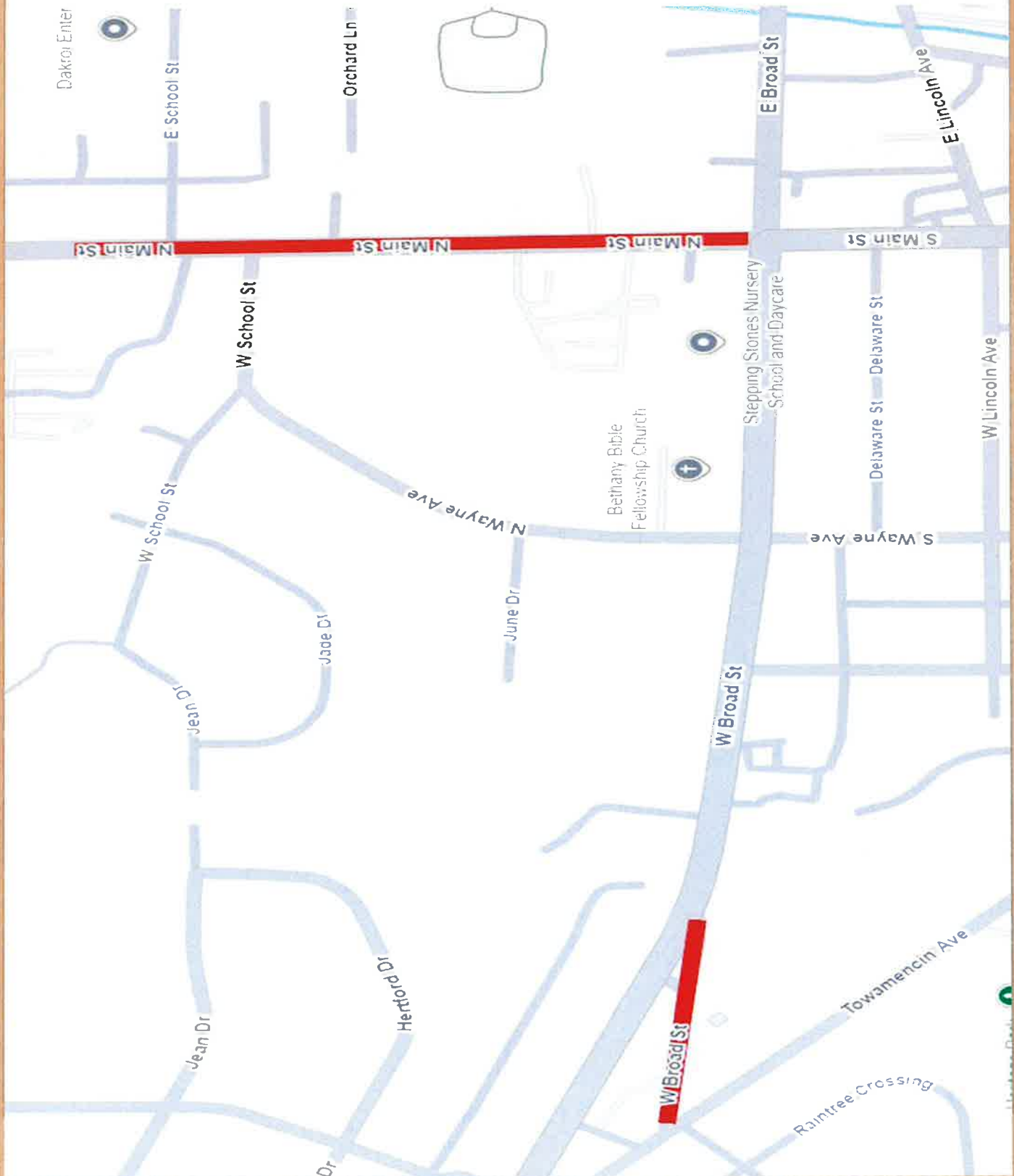
\$300,000.00+ to date reimbursed

HATFIELD BOROUGH
BROAD ST. & N. MAIN ST. UTILITY REPLACEMENT PROJECT

COST ESTIMATES
12/19/2022

| Scope | AWARDED | AWARDED | AWARDED | AWARDED | Hatfield Borough | Total |
|-------------------------------|--|--|----------------------------|---------------------------------|--|--------------------|
| | 2019 PA SW&S | 2019 H2O PA | 2022 PA SW&S (ARPA) | 2022 H2O PA (ARPA) | | |
| N. Main St. Sanitary Sewer | \$423,106 | \$0 | \$0 | \$306,894 | \$0 | \$730,000 |
| E. Broad St. Storm Sewer | \$0 | \$95,000 | \$498,550 | \$0 | \$0 | \$593,550 |
| W. Broad St. Storm Sewer | \$0 | \$575,227 | \$0 | \$0 | \$924,773 | \$1,500,000 |
| N. Main St. Storm Sewer | | | | | | |
| Total | \$423,106 | \$670,227 | \$498,550 | \$306,894 | \$924,773 | \$2,823,550 |
| | Use for 2022 H2O PA match (N. Main St. Sanitary) | Use for W. Broad St. & N. Main St. Storm | Use for Broad St. Storm | Use for N. Main St. Sanitary | Use for W. Broad St. & N. Main St. Storm | |
| Total Grant Funding | | \$1,898,777 | | | | |

2025 Joint Roadway Resurfacing Project



Q&A: use Zoom feature
email admin@hatfieldborough.com
text 267-421-4753

2025 Financial Overview

2025 Budget Highlights

Borrowing & Debt Service

PJM Auction: Impact on Electric Rates

Jaime E. Snyder, Borough Manager

2025

BUDGET HIGHLIGHTS

WHAT YOU NEED TO KNOW

1

EXPENSES

- Debt Service **\$659,000.00**
- Police Services & Debt **\$1,095,000.00**
- Power Purchases **\$2.2 Million**
- Miscellaneous **\$150,000.00** & an average of 2.5% increase in all expense line items

2

REVENUES

- EIT / LST additional **\$55,000.00**
- RE Tax Millage **\$139,536.00**
- Electric Rates **\$319,995.00**
- Sewer EDU Audit **\$180,450.00**
- Rental Inspection Program **\$60,000.00**

3

PROJECTS

- Roadway Resurfacing Project **\$100,400.00**
- Sewer Projects **\$23,000.00**
- Electric Projects **\$60,000.00**

4

IMPACT TO REAL ESTATE TAXES

3.25 mils to 4.25 mils

1mil increase is an average increase of \$150.00 per year or \$12.50 per month

5

IMPACT TO ELECTRIC RATES

Average all electric house: **\$27.00 per month increase**

Average all electric apartment: **\$12.50 per month increase**

Average all electric commercial property: **\$30.00 - \$175.00 per month increase**

****commercial rate increase impacts are based on billing category
call billing department for specific rate impacts for your business**

Borrowing & Debt Service

2020 Series Notes:

Principal Payment of \$400,000.00

Interest Payment of \$30,085.77

Total: \$430,085.77

2021 Series Notes A & B:

Principal Payment of \$24,000.00 / \$68,000.00

Interest Payment of \$8,129.25 / \$17,256.21

Total A & B: \$117,385.46

\$547,471.23 2025 Debt Payment

2024 Series Notes A & B:

2.9 Million Dollars Borrowed. 1.8 Grant Funded.

\$300,000.00+ paid off to date

A Note 3.645% rate

B Note Est. 3.70% rate (variable)

\$99,000.00 AMI Debt

WHY ARE MY ELECTRIC RATES INCREASING?



**CAPACITY COSTS ROSE FROM
2.2 billion to 14.7 billion
AFTER THE JULY 2024 PJM AUCTION**

In the PJM region, capacity prices for the 2025/26 delivery year rose to \$269.92 per MW-day from \$28.92 per MW-day in the last auction.

Who is PJM?

PJM is a regional transmission organization (RTO) that coordinates the movement of wholesale electricity in parts of the Mid-Atlantic and Midwest. It ensures reliability, manages the electricity grid, and facilitates competitive electricity markets across its territory, which includes parts of 13 states and Washington, D.C. PJM plays a crucial role in balancing supply and demand, planning for future infrastructure needs, and integrating renewable energy sources into the grid.

What is Capacity?

Capacity represents the total, reliable amount of electricity that can be generated or imported into the PJM region to meet the PJM's Peak Demand. Demand is the amount of electrical power required by customers at a given time.

What is PJM's Role in Capacity?

One of PJM's roles is to ensure there is enough capacity available in the system to keep the lights on, even at times of maximum energy use. PJM procures capacity through a competitive auction process, which is designed to ensure that there is enough supply to meet demand over a certain period. Capacity prices are determined based on supply and demand.

How does this impact the Hatfield Borough budget?

Hatfield Borough's capacity charges in 2024 were \$4.59 per MWh and in 2025 the rate jumps to \$16.47 per MWh.

This is the major reason for the increase in the budget to 2.2 million dollars in 2025 to purchase power.

The increase in capacity costs will impact all customers in PJM - including municipal utilities, electric cooperatives, and traditional IOU utilities (PPL, PECO etc.)

Ordinance Updates

Rental Inspection Program
Recycling

Jaime E. Snyder, Borough Manager

Ordinance No. 557

RESIDENTIAL RENTAL PROPERTY INSPECTION PROGRAM



Purpose

The purpose of this Ordinance shall be to protect and promote the public health, safety and welfare of its citizens, to establish rights and obligations of owners and occupants relating to residential rental units in the Borough and to encourage owners and occupants to maintain and improve the quality of life and quality of rental housing within the community.

Registration

Each year, every owner, operator, responsible agent, or manager of a residential rental unit located in the Borough of Hatfield shall register the property and apply for a residential rental unit license for each residential rental unit

Inspections shall occur when the unit first becomes a registered residential rental unit and no less than once every three years thereafter, or, if sooner, at such time as the property undergoes a change of ownership or change in tenant.

Requirements

- **Exterior**
- **Electrical**
- **Fire Protection & Safety**
- **Plumbing & Heating**
- **Common Spaces**
- **General Property Maintenance**

www.hatfieldborough.com/departments/building-zoning

REUSE REDUCE RECYCLE

Did you know, the more you recycle, the more grant funds Hatfield Borough receives? **With** these funds Hatfield Borough can provide curbside chipping, leaf pick up, and community recycling events for all residents.



Ordinance No. 555 Municipal Waste Collection and Recycling

The reduction of the amount of Municipal Waste and conservation of Recyclable Materials is an important public concern because of the growing problem of Municipal Waste disposal and its detrimental impact on the environment. It is the intent of this Ordinance to require, promote and regulate Recycling activities in the Borough and to protect the health, safety and welfare of residents.

Single-Family Residential Establishments

The following materials must be recycled at Single-family Residential Establishments: A single-stream mix of Aluminum Cans, Bi-metal Containers, Corrugated Paper, Glass Containers, High-grade Office Paper, Mixed Paper, Newsprint, and Plastic Containers, and Leaf Waste.

Multi-Family Establishments

The following materials are required to be recycled by multi-family establishments at a minimum: Aluminum Cans, Bi-metal Containers, Corrugated Paper, Glass Containers, High-grade Office Paper, Mixed Paper, Newsprint, Plastic Containers, and Leaf Waste.

Commercial, Institutional, and Municipal Establishments

At a minimum, the following materials are required to be recycled in commercial, institutional, and Municipal Establishments: High-grade Office Paper, Corrugated Paper, Aluminum Cans, and Leaf Waste.

For more information on Ordinance No. 555 please visit:
<https://www.hatfieldborough.com/information/trash-recycling>

Communications & Events

Ready Montco
2045 Comprehensive Plan Survey
2025 Event Dates



Hatfield Borough19440



Hatfield Borough, PA



@HatfieldBorough19440

admin@hatfieldborough.com

www.hatfieldborough.com

Be Alert
Be Informed
Be READY
MONTCO

ReadyMontco is your official source for notifications about emergencies, severe weather, crime alerts and disasters in Montgomery County.

Receive time-sensitive messages wherever you specify - on your home, mobile phone, business phone, email address, text messages, and more!

Sign Up: www.ReadyMontco.org

*ReadyMontco only sends alerts specific to Montgomery County.
Therefore, the address you provide must be located within Montgomery County.*



Powered By
Montgomery County
Department of Public Safety
Ready. For You.

Scan with your
mobile device:



Did you know that Hatfield Borough customers can now receive their utility bills conveniently via email?

Say goodbye to paper bills! With email billing, your electric and sewer bills go directly to your inbox, eliminating the need to wait for mail delivery or the chance of misplacing the paper copy. Enjoy the flexibility of accessing your bills anytime, anywhere. Email billing offers instant delivery and is an eco-friendly choice that helps the Borough cut costs on printing and postage, ultimately keeping expenses low.

To sign up, contact the Hatfield Borough Office at 215-855-0781 (option 4) or email utilitybilling@hatfieldborough.com.



HATFIELD BOROUGH

2045 COMPREHENSIVE PLAN

What is your vision for Hatfield Borough?

We are looking for your input as we begin the update of the borough's comprehensive plan. The plan will consolidate recent past planning efforts and identify emerging planning issues to provide a framework for land use management and maintaining our quality of life. Your opinion is vital as we try to understand the issues that are important to you.

Please take advantage of the following opportunities for community involvement:



COMMUNITY SURVEY

Complete the comprehensive plan survey at www.surveymonkey.com/r/hatfieldborough2045 or go directly to the survey with your smartphone using the adjacent QR code. Hard Copies available at Borough Hall.

HATFIELD BOROUGH

2045 COMPREHENSIVE PLAN

What is your vision for Hatfield Borough?

We are looking for your input as we begin the update of the borough's comprehensive plan. The plan will consolidate recent past planning efforts and identify emerging planning issues to provide a framework for land use management and maintaining our quality of life. Your opinion is vital as we try to understand the issues that are important to you.

Please take advantage of the following opportunities for community involvement:



COMMUNITY SURVEY

Complete the comprehensive plan survey at www.surveymonkey.com/r/hatfieldborough2045 or go directly to the survey with your smartphone using the adjacent QR code. Hard Copies available at Borough Hall.



2025

EARTH DAY
ACTIVITIES**

21

WEEK OF
APRIL

FOUNDER'S
DAY

14

JUNE

MOVIE IN THE
PARK

21

AUG

FALL FEST &
CAR SHOW

13

SEPT

HALLOWEEN
HAPPY

31

OCT

STREET
EVENTS
CALENDAR

For more information visit

www.hatfieldborough.com or follow us
on Facebook [Hatfieldborough19440](https://www.facebook.com/Hatfieldborough19440)

**Tune in to our social media for daily happenings



District Court 38-1-28 Judge Edward Levine



Congressman Brian Fitzpatrick



State Senator Maria Collett
Gwynedd Corporate Center
1180 Welsh Road
Suite 130
North Wales, PA 19454
(215) 368-1429



State Representative Steve Malagari
Lansdale Office
100 West Main Street
Suite 110
Lansdale, PA 19446
(267) 768-3671



Commissioner
Neil Makhija
Chair



Commissioner
Jamila H. Winder
Vice Chair



Commissioner
Thomas
DiBello

Q&A: use Zoom feature
email admin@hatfieldborough.com
text 267-421-4753

Open Discussion

with Mayor, Council, and Staff

Save the Date:
November 12, 2025
2026 Budget Meeting

Heritage Park Pond

Stephen S. Fickert Jr., Public Works Director, Electric Superintendent
Chad Camburn, Borough Engineer

HERITAGE PARK POND

1960 - Present Day



HERITAGE PARK POND

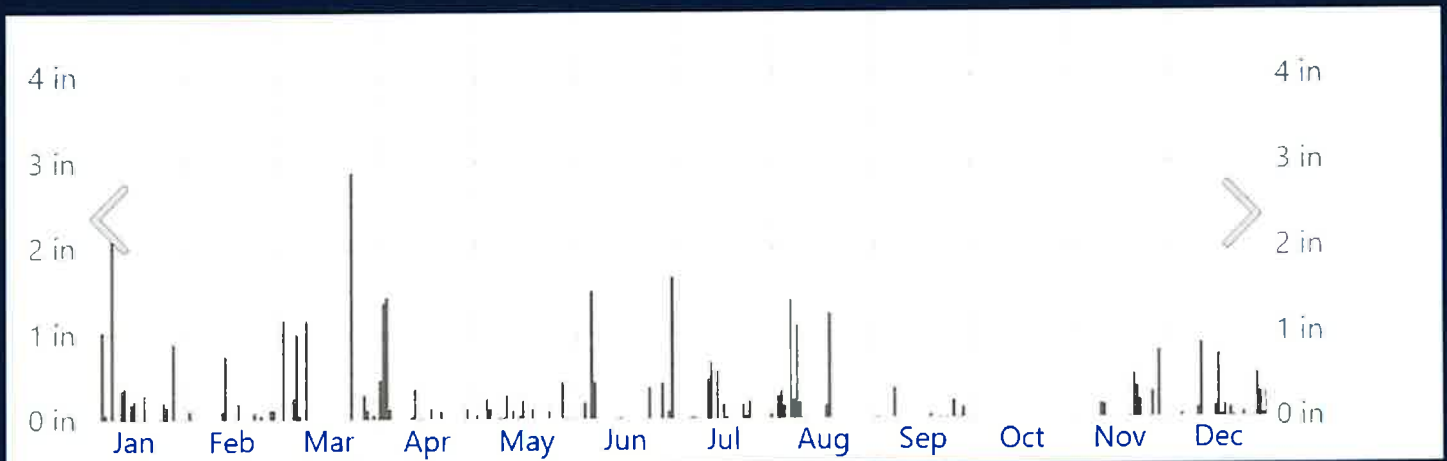
Fall 2024



Spring 2025



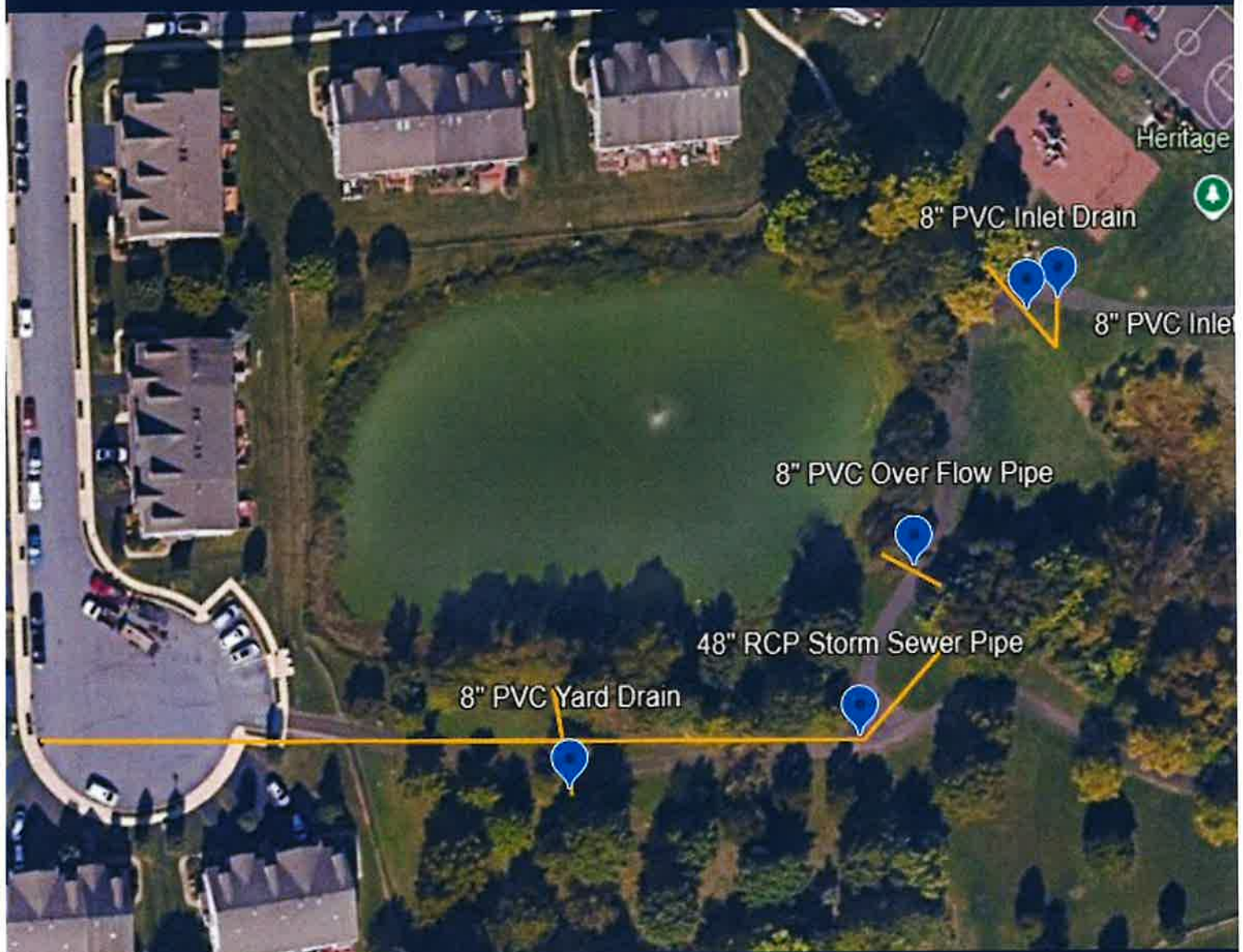
2024 Total Precipitation



January - May 2025

Total Rain Fall: 11.96 inches

HERITAGE PARK POND LAYOUT



HERITAGE PARK POND OPT. 1

Fill Pond and Plant Grass / Meadow Mix \$100,000.00

PROS

- Low Maintenance
- Moderate Chance for Funding
- Additional Open Space



CONS

- Possible DEP Assessment
- Impact on Wildlife
- Lose Aesthetic Appeal of Pond



****The pros and cons list is not all inclusive**

HERITAGE PARK POND OPT. 2

Pond Capable of Sustaining Aquatic Life \$110,000.00

PROS

- Benefit to Environment
- Aesthetic Appeal
- Moderate Chance for Funding
- Additional Rec. Activity



CONS

- High Maintenance
- May Require Fencing (liability)
- Attract Water Fowl
- Natural Spring Sustainability



****The pros and cons list is not all inclusive**

HERITAGE PARK POND OPT. 3

Naturalized Wetlands with Walking Path \$115,000.00

PROS

- Most Benefits for MS4 Program
- High Prob. of Grant Funds
- Moderate Maintenance
- Additional Open Space



CONS

- Highest Cost Option
- Possible DEP Assessment



**The pros and cons list is not all inclusive

Q&A: use Zoom feature
email admin@hatfieldborough.com
text 267-421-4753

Open
Discussion
with Mayor, Council, and Staff